

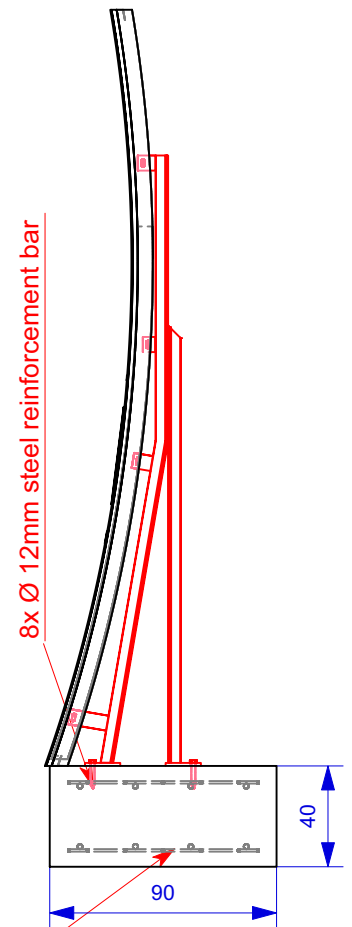
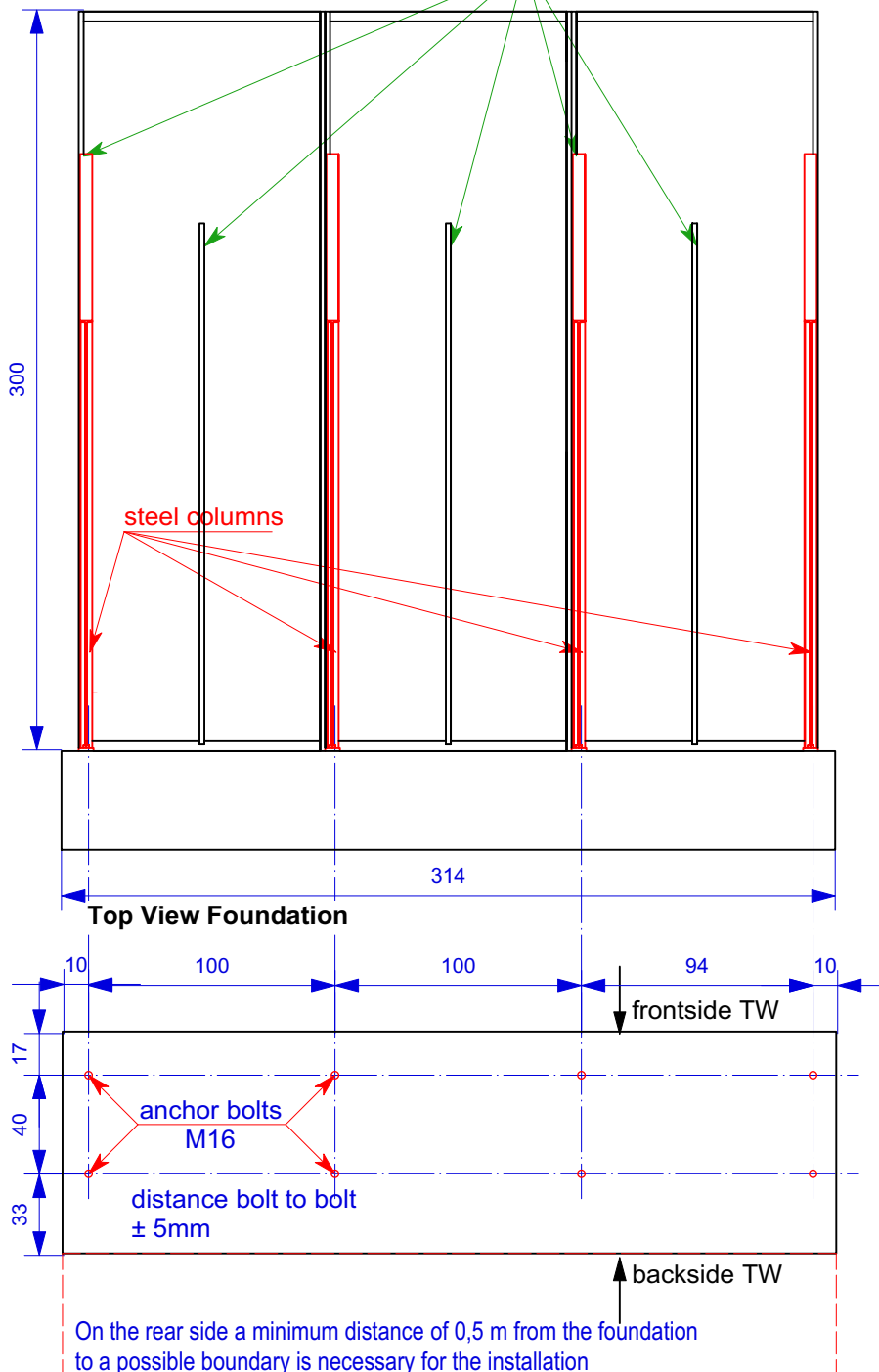


Keep exact position of the steel columns to stiffening ribs

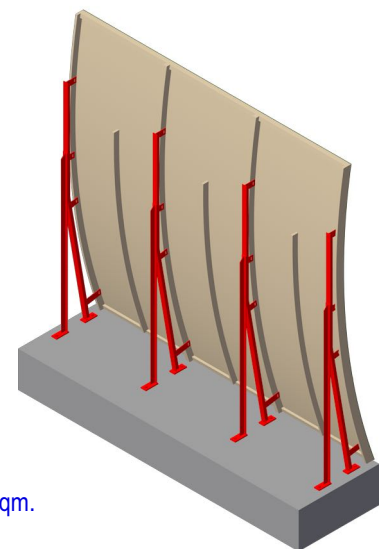
Backside

anti-vibration ribs

Side View Foundation



2x reinforcement mesh R188A



Alle: Both the left and the right element will always remain in their position. Additional elements have to be placed in between so that the overall dimension will be enlarged by 100 cm per element.

According the structural analysis the maximum soil pressure is calculated with 220 KN/sqm. In case of doubt the ground conditions are to be checked on site.

Foundation Plan  
Smash-Back Tennis Practise Wall Type I

Scale: 1:30

Drawn on: 06. 12. 2019