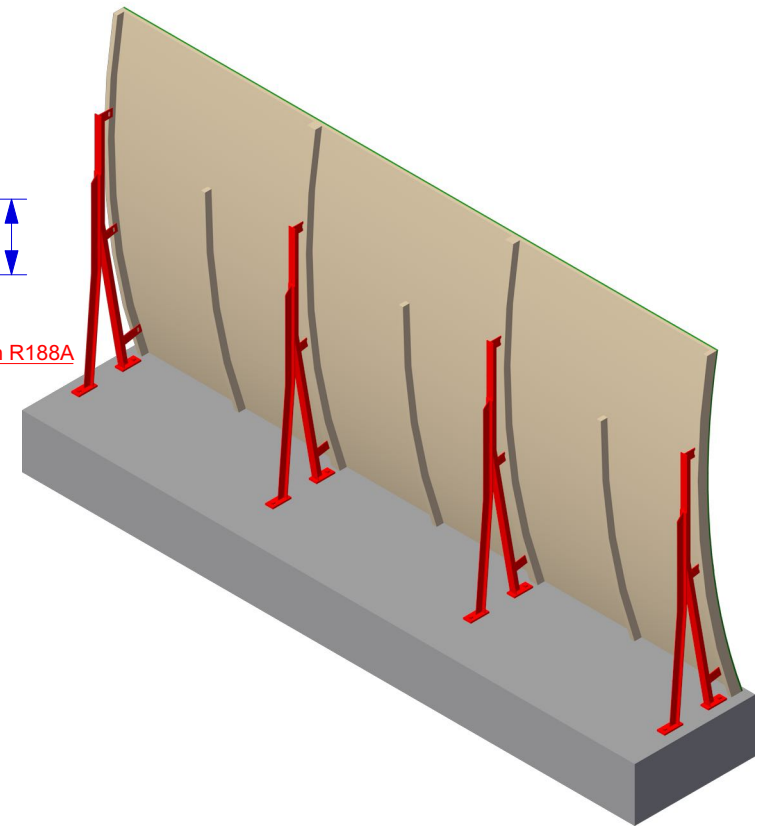
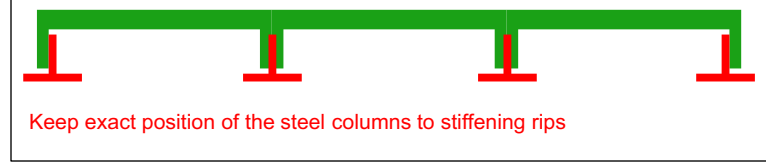
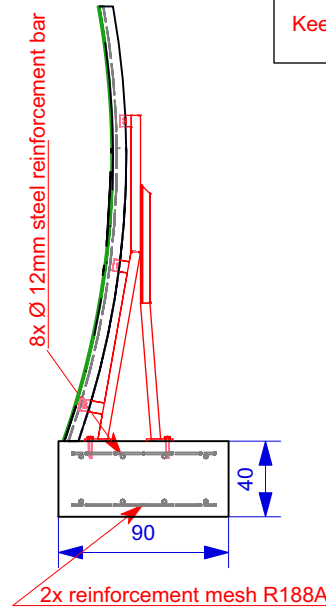


Alle: Both the left and the right element will always remain in their position. Additional elements have to be placed in between so that the overall dimension will be enlarged by 148 cm per element.

According the structural analysis the maximum soil pressure is calculated with 220 KN/sqm. In case of doubt the ground conditions are to be checked on site.

Side View Foundation



Foundation Plan
Smash-Back Tennis Practise Wall Type II

Scale: 1:30

Drawn on: 06. 12. 2019